



THE KONA at OAKMONT

THE TRANSITIONAL

4 Bedrooms • 3 Bathrooms • 2-Car Garage • 2,440 ft² Living Area • 3,366 ft² Under Roof

The Kona floor plan offers 2,440 square feet of versatile living space, featuring four bedrooms and three baths. The open-concept design connects a spacious living room, dining area, and chef's kitchen, making it perfect for family gatherings. The luxurious master suite, complete with a walk-in closet and a private bath, opens onto a covered lanai—a perfect spot for morning coffee. Additional bedrooms offer flexibility for family or guests, and with ICI Homes' customization options, you can personalize the Kona to fit your lifestyle, from upgraded baths to French doors and more.

* Renderings may vary from actual home. Please see disclaimer for more details.

\$2,828

ESTIMATED SAVINGS



This home has a HERS Score of 59 and is estimated to save you \$2,828 on your annual utility bills vs. a resale home.

4 Bedrooms • 3 Bathrooms • 2-Car Garage

Oakmont
Gainesville, FL

Available in
Oakmont 50 RL

Living Area: 2,440 ft² **Under Roof:** 3,366 ft²

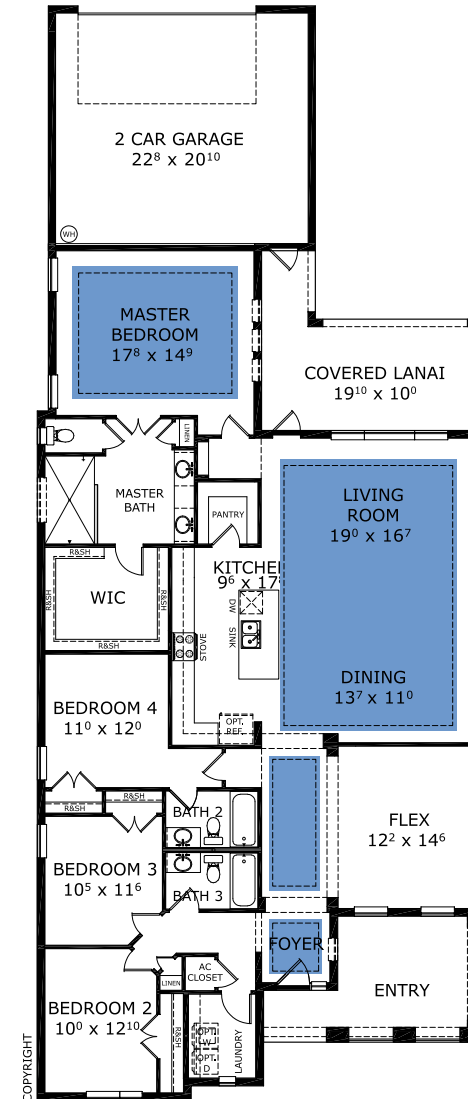
THE FARMHOUSE MODERN



THE COASTAL MODERN



FIRST FLOOR



Customize this plan, it's easy! (844) 349-6401 or visit ICIHomes.com

©1994-2026 ICI Homes™ is a registered trademark whose divisions operate under CBC1267313, CBC1262114, CBC1262120, CBC1264300, CBC1265743, CBC1333091, and CBC1257263. Features may be plan specific and vary. Please consult a Sales Associate for specific feature information. All new ICI Homes come with a HBW 2-10 warranty. Certain elevations may have additional fees. Prices may not include lot premiums, upgrades, and options. Inventory home completion date may vary. All prices subject to change without notice. All plans are property of ICI Homes and cannot be copied or used without permission. Prices, promotions, incentives, features, options, amenities, floor plans, elevations, site maps, designs, materials, and dimensions are for illustrative purposes only and subject to change without notice. Plans should not be relied upon as representation express or implied of final sizes, locations, features or dimensions. Square footage and dimensions are estimated and may vary from description. All HERS ratings and savings are calculated by a third party energy rating service. Actual savings will depend on a number of factors, including but not limited to daily activities, home maintenance practices, household size, use of appliances, lighting and internal climate control systems, lot orientation, and surrounding climate and weather conditions. Created on 02/08/2026: **Garage Orientation R / L:** _____

