



THE CARMELA at TAMAYA

THE CARMELA - SPANISH

SOLD

3 Bedrooms • 2 Bathrooms • 2-Car Garage • 1,847 ft² Living Area • 2,705 ft² Under Roof

* Renderings may vary from actual home. Please see disclaimer for more details.

\$1,164

ESTIMATED SAVINGS



This home has a HERS Score of 57 and is estimated to save you \$2,245 on your annual utility bills vs. a resale home.

THE CARMELA

3 Bedrooms • 2 Bathrooms • 2-Car Garage

SOLD

Tamaya

Classic Series | 50' Wide Lots - Lot 066

12679 Laurel Bay Drive
Jacksonville, FL, 32246

Living Area: 1,847 ft²

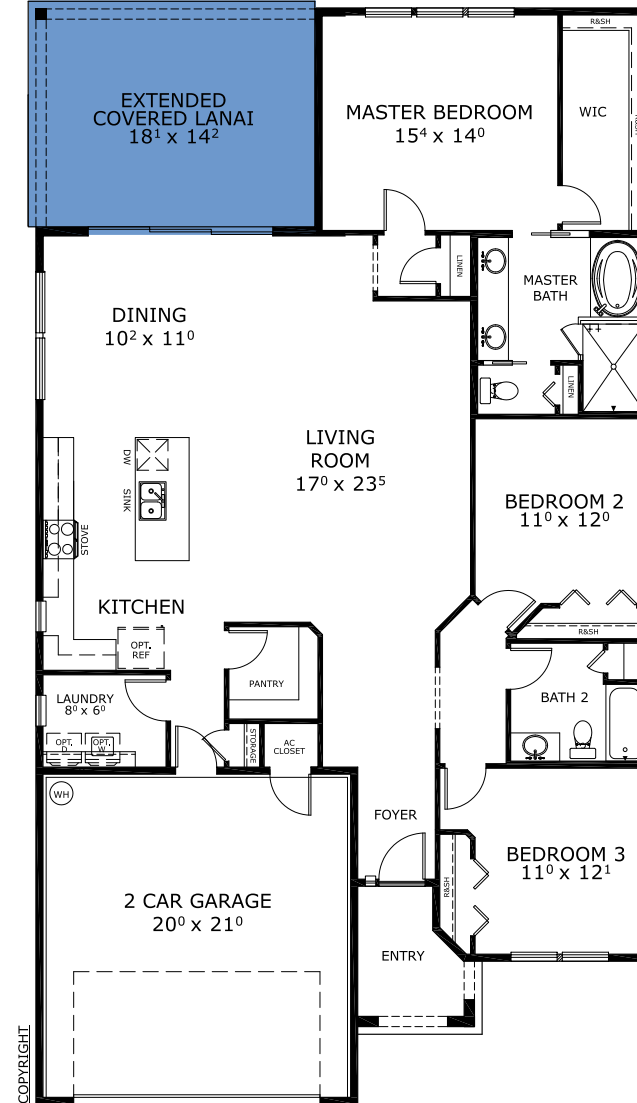
Structural Options Included in This Home:

- ✓ Extended Covered Lanai
- ✓ Outlet-Floor Plug
- ✓ Laundry Sink-Rough In

And much more....

Priced at: **\$631,815**

FIRST FLOOR



This Carmela is a Sold! [Speak to a Sales Counselor \(844\) 349-6401](https://www.ichomes.com) or visit [ICIHomes.com](https://www.ichomes.com)

©1994-2026 ICI Homes™ is a registered trademark whose divisions operate under CBC1267313, CBC1262114, CBC1262120, CBC1264300, CBC1265743, CRC1333091, and CBC1257263. Features may be plan specific and vary. Please consult a Sales Associate for specific feature information. All new ICI Homes come with a HBW 2-10 warranty. Certain elevations may have additional fees. Prices may not include lot premiums, upgrades, and options. Inventory home completion date may vary. All prices subject to change without notice. All plans are property of ICI Homes and cannot be copied or used without permission. Prices, promotions, incentives, features, options, amenities, floor plans, elevations, site maps, designs, materials, and dimensions are for illustrative purposes only and subject to change without notice. Plans should not be relied upon as representation express or implied of final sizes, locations, features or dimensions. Square footage and dimensions are estimated and may vary from description. All HERS ratings and savings are calculated by a third party energy rating service. Actual savings will depend on a number of factors, including but not limited to daily activities, home maintenance practices, household size, use of appliances, lighting and internal climate control systems, lot orientation, and surrounding climate and weather conditions. Created on 06/19/2026: _____ Garage Orientation R / L: _____

