



## THE AUGUSTA at BROWNS LANDING

THE AUGUSTA - COASTAL

**5 Bedrooms • 4 Bathrooms • 2-Car Garage • 4,136 ft<sup>2</sup> Living Area • 4,879 ft<sup>2</sup> Under Roof**

The Augusta by ICI Homes is a blend of elegance and functionality, designed for today's lifestyle. This 5-bedroom, 4-bathroom floor plan opens with a grand foyer, formal dining area, and private study. The two-story living room flows seamlessly into the deluxe kitchen and covered lanai, perfect for entertaining. The main-floor master suite is a private retreat, while upstairs, a loft, media room, and three additional bedrooms offer versatile space for family life. With customizable options like a game room or extended balcony, Augusta adapts to your vision, making every day a dream come true.

\* Renderings may vary from actual home. Please see disclaimer for more details.

**\$3,773**

**ESTIMATED SAVINGS**



This home has a HERS Score of 56 and is estimated to save you \$3,773 on your annual utility bills vs. a resale home.

# THE AUGUSTA


5 Bedrooms • 4 Bathrooms • 2-Car Garage

**Browns Landing**  
Port Orange, FL

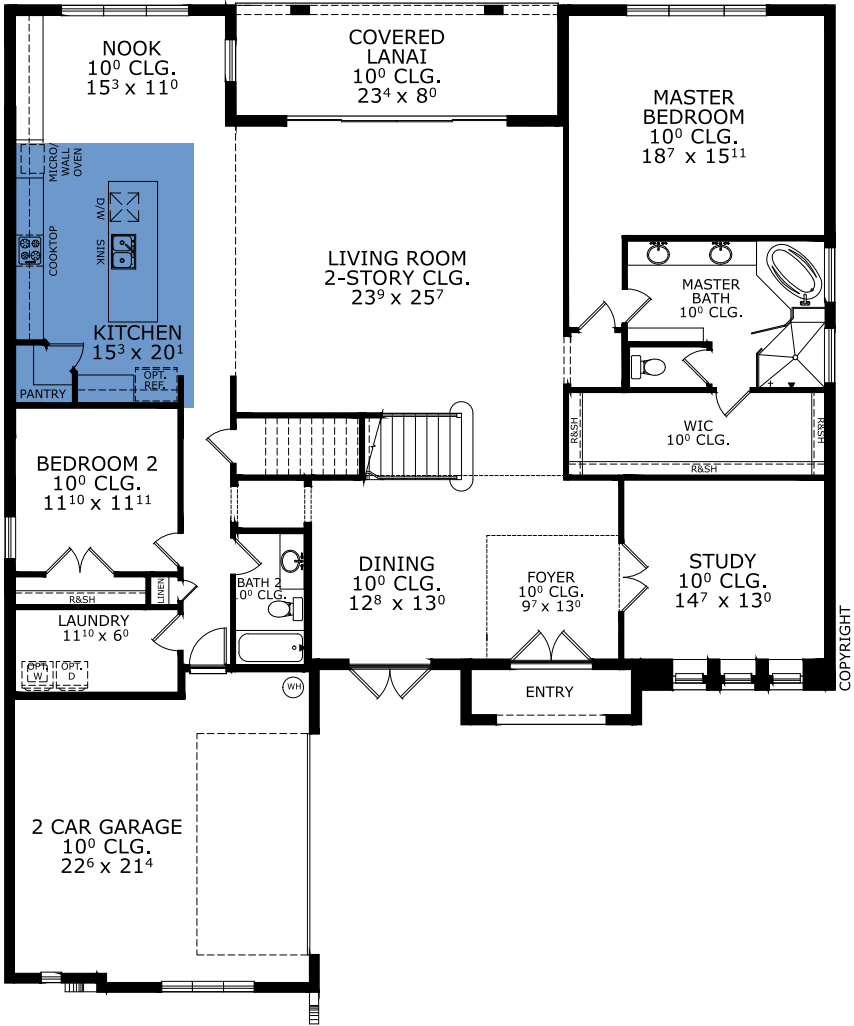
**Available in**  
Estates at Browns Landing OYL

**Living Area:** 4,136 ft<sup>2</sup> **Under Roof:** 4,879 ft<sup>2</sup>

THE CRAFTSMAN



FIRST FLOOR



Customize this plan, it's easy! (844) 349-6401 or visit [ICIHomes.com](https://www.ICIHomes.com)

©1994-2026 ICI Homes™ is a registered trademark whose divisions operate under CBC1267313, CBC1262114, CBC1262120, CBC1264300, CBC1265743, CRC1333091, and CBC1257263 . Features may be plan specific and vary. Please consult a Sales Associate for specific feature information. All new ICI Homes come with a HBW 2-10 warranty. Certain elevations may have additional fees. Prices may not include lot premiums, upgrades, and options. Inventory home completion date may vary. All prices subject to change without notice. All plans are property of ICI Homes and cannot be copied or used without permission. Prices, promotions, incentives, features, options, amenities, floor plans, elevations, site maps, designs, materials, and dimensions are for illustrative purposes only and subject to change without notice. Plans should not be relied upon as representation express or implied of final sizes, locations, features or dimensions. Square footage and dimensions are estimated and may vary from description. All HERS ratings and savings are calculated by a third party energy rating service. Actual savings will depend on a number of factors, including but not limited to daily activities, home maintenance practices, household size, use of appliances, lighting and internal climate control systems, lot orientation, and surrounding climate and weather conditions. Created on 02/08/2026: \_\_\_\_\_ Garage Orientation R / L: \_\_\_\_\_



# THE AUGUSTA

5 Bedrooms • 4 Bathrooms • 2-Car Garage

**Browns Landing**

Port Orange, FL

**Available in**

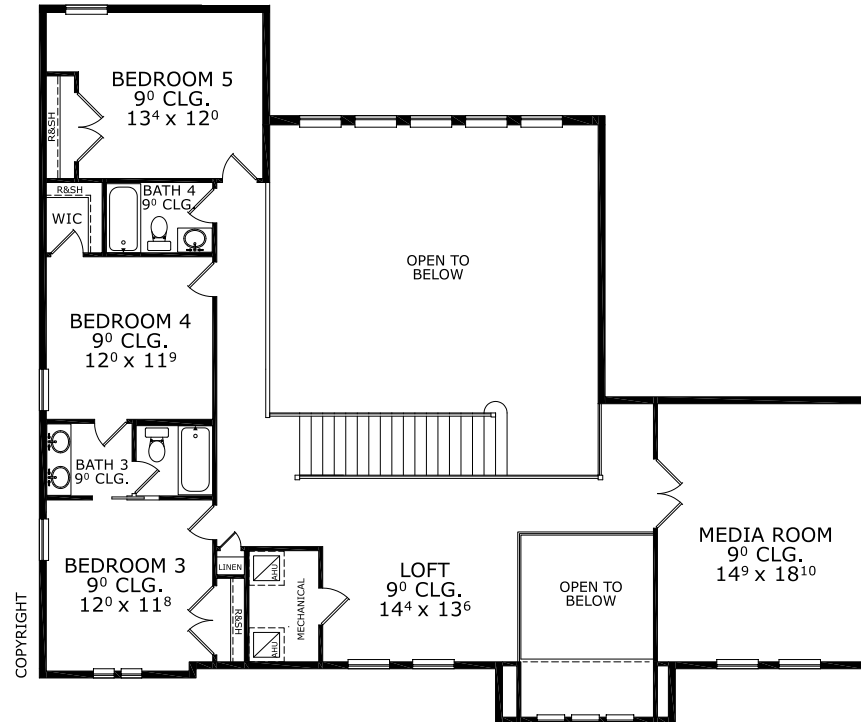
Estates at Browns Landing OYL

**Living Area:** 4,136 ft<sup>2</sup> **Under Roof:** 4,879 ft<sup>2</sup>

## THE CRAFTSMAN



## SECOND FLOOR



**Customize this plan, it's easy! (844) 349-6401 or visit [ICIHomes.com](https://www.ICHomes.com)**

©1994-2026 ICI Homes™ is a registered trademark whose divisions operate under CBC1267313, CBC1262114, CBC1262120, CBC1264300, CBC1265743, CRC1333091, and CBC1257263. Features may be plan specific and vary. Please consult a Sales Associate for specific feature information. All new ICI Homes come with a HBW 2-10 warranty. Certain elevations may have additional fees. Prices may not include lot premiums, upgrades, and options. Inventory home completion date may vary. All prices subject to change without notice. All plans are property of ICI Homes and cannot be copied or used without permission. Prices, promotions, incentives, features, options, amenities, floor plans, elevations, site maps, designs, materials, and dimensions are for illustrative purposes only and subject to change without notice. Plans should not be relied upon as representation express or implied of final sizes, locations, features or dimensions. Square footage and dimensions are estimated and may vary from description. All HERS ratings and savings are calculated by a third party energy rating service. Actual savings will depend on a number of factors, including but not limited to daily activities, home maintenance practices, household size, use of appliances, lighting and internal climate control systems, lot orientation, and surrounding climate and weather conditions. Created on 02/08/2026: \_\_\_\_\_ Garage Orientation R / L: \_\_\_\_\_

