



## THE ATLANTIC at VERONA OCEANSIDE

THE ATLANTIC - WEST INDIES

**4 Bedrooms • 3 Bathrooms • 2-Car Garage • 2,720 ft<sup>2</sup> Living Area • 3,911 ft<sup>2</sup> Under Roof**

The Atlantic is the first new floor plan created to encourage a close-knit community and a casual lifestyle. An expansive living room/kitchen area creates the heart of the home. Views from the covered lanai greet you as soon as you walk in through the foyer. The lanai is flanked on one side by the private master bedroom with spacious master bath.

\* Renderings may vary from actual home. Please see disclaimer for more details.

**\$2,649**

**ESTIMATED SAVINGS**



This home has a HERS Score of 56 and is estimated to save you \$2,649 on your annual utility bills vs. a resale home.

# THE ATLANTIC

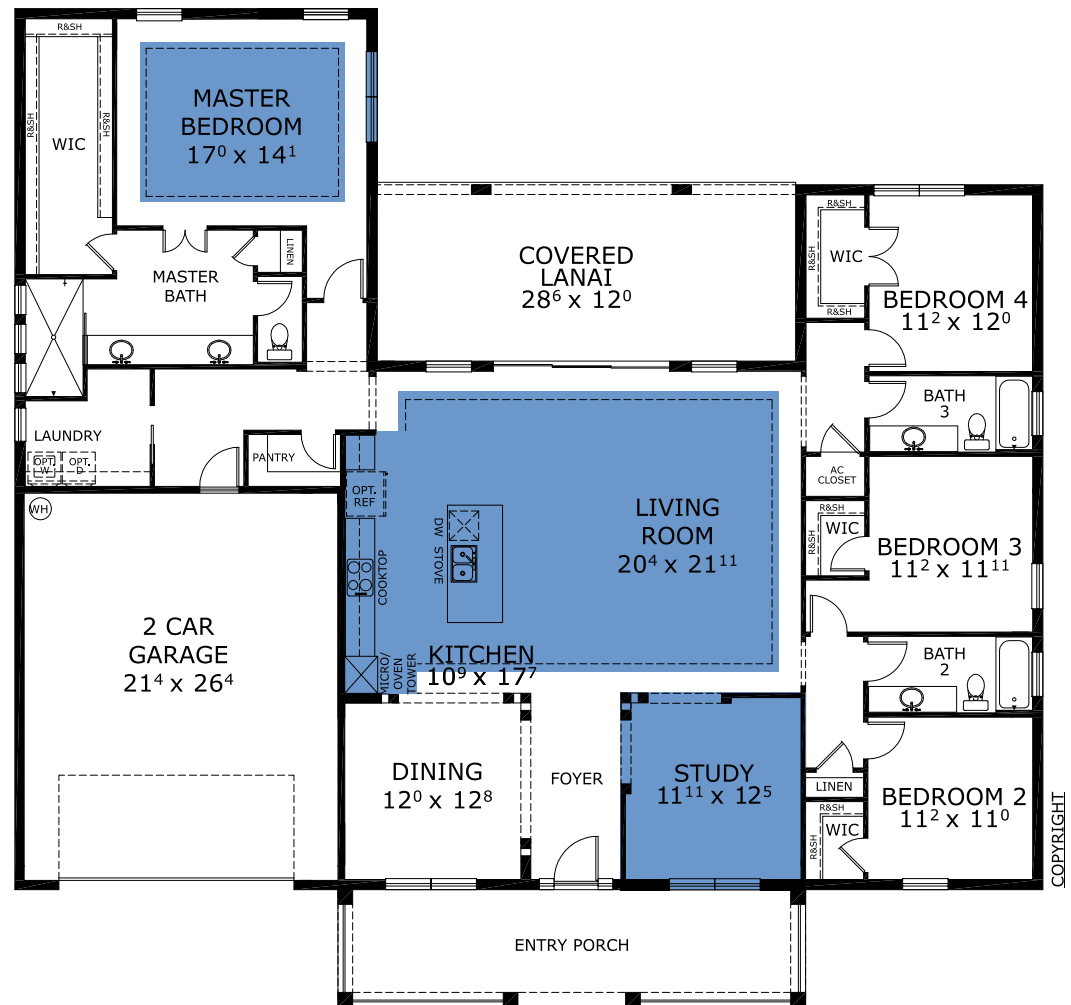
**4 Bedrooms • 3 Bathrooms • 2-Car Garage**

**Verona Oceanside** Available in  
Ormond by the Sea, FL Verona

**Living Area: 2,720 ft<sup>2</sup> Under Roof: 3,911 ft<sup>2</sup>**



## FIRST FLOOR



Customize this plan, it's easy! (844) 349-6401 or visit [ICIHomes.com](http://ICIHomes.com)

©1994-2026 ICI Homes™ is a registered trademark whose divisions operate under CBC1267313, CBC1262114, CBC1262120, CBC1264300, CBC1265743, CBC1330091, and CBC1257263 . Features may be plan specific and vary. Please consult a Sales Associate for specific feature information. All new ICI Homes come with a HBW 2-10 warranty. Certain elevations may have additional fees. Prices may not include lot premiums, upgrades, and options. Inventory home completion date may vary. All prices subject to change without notice. All plans are property of ICI Homes and cannot be copied or used without permission. Prices, promotions, incentives, features, options, amenities, floor plans, elevations, site maps, designs, materials, and dimensions are for illustrative purposes only and subject to change without notice. Plans should not be relied upon as representation express or implied of final sizes, locations, features or dimensions. Square footage and dimensions are estimated and may vary from description. All HERS ratings and savings are calculated by a third party energy rating service. Actual savings will depend on a number of factors, including but not limited to daily activities, home maintenance practices, household size, use of appliances, lighting and internal climate control systems, lot orientation, and surrounding climate and weather conditions. Created on 02/08/2026: \_\_\_\_\_ Garage Orientation R / L: \_\_\_\_\_

